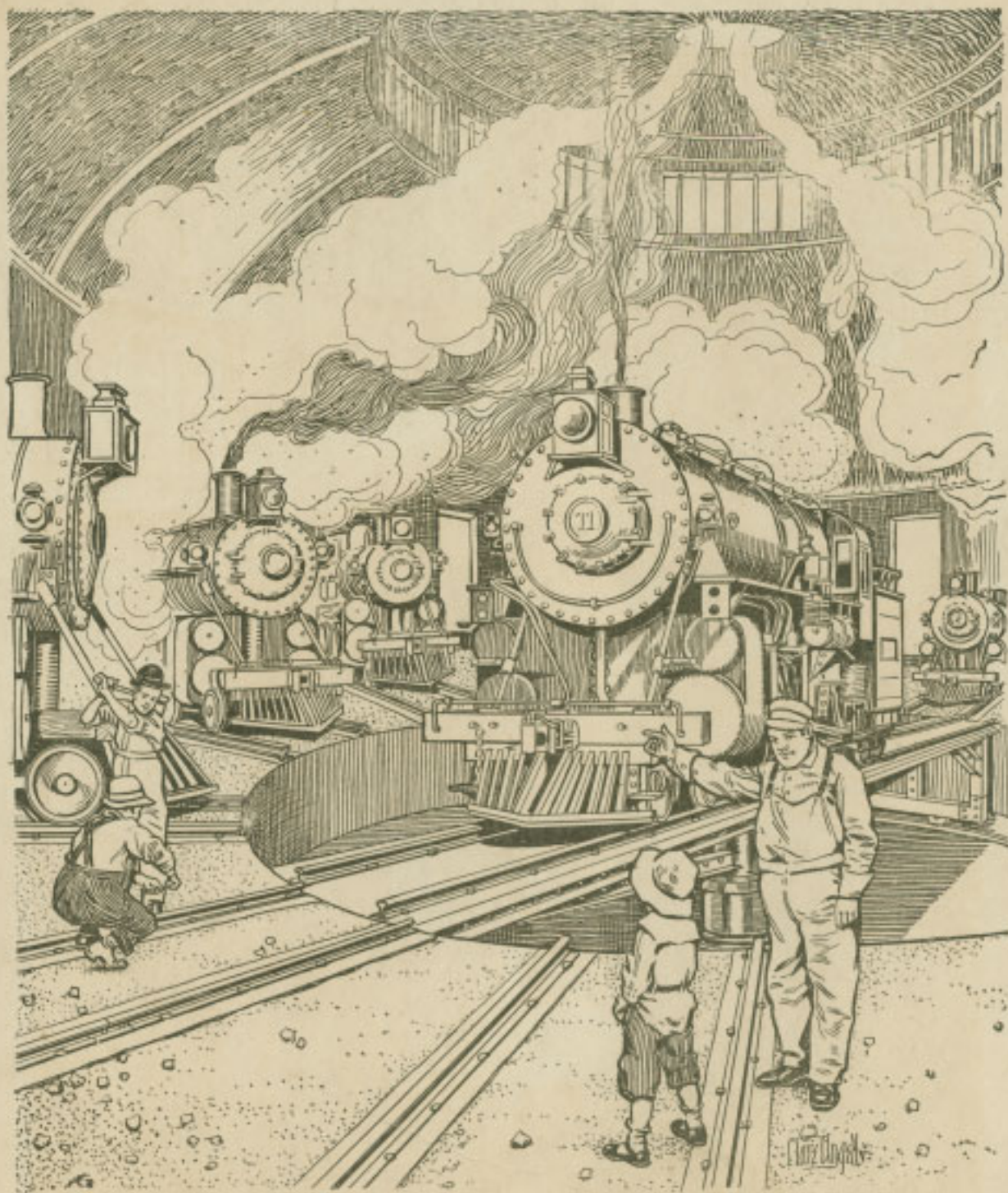


# THE RAILROAD

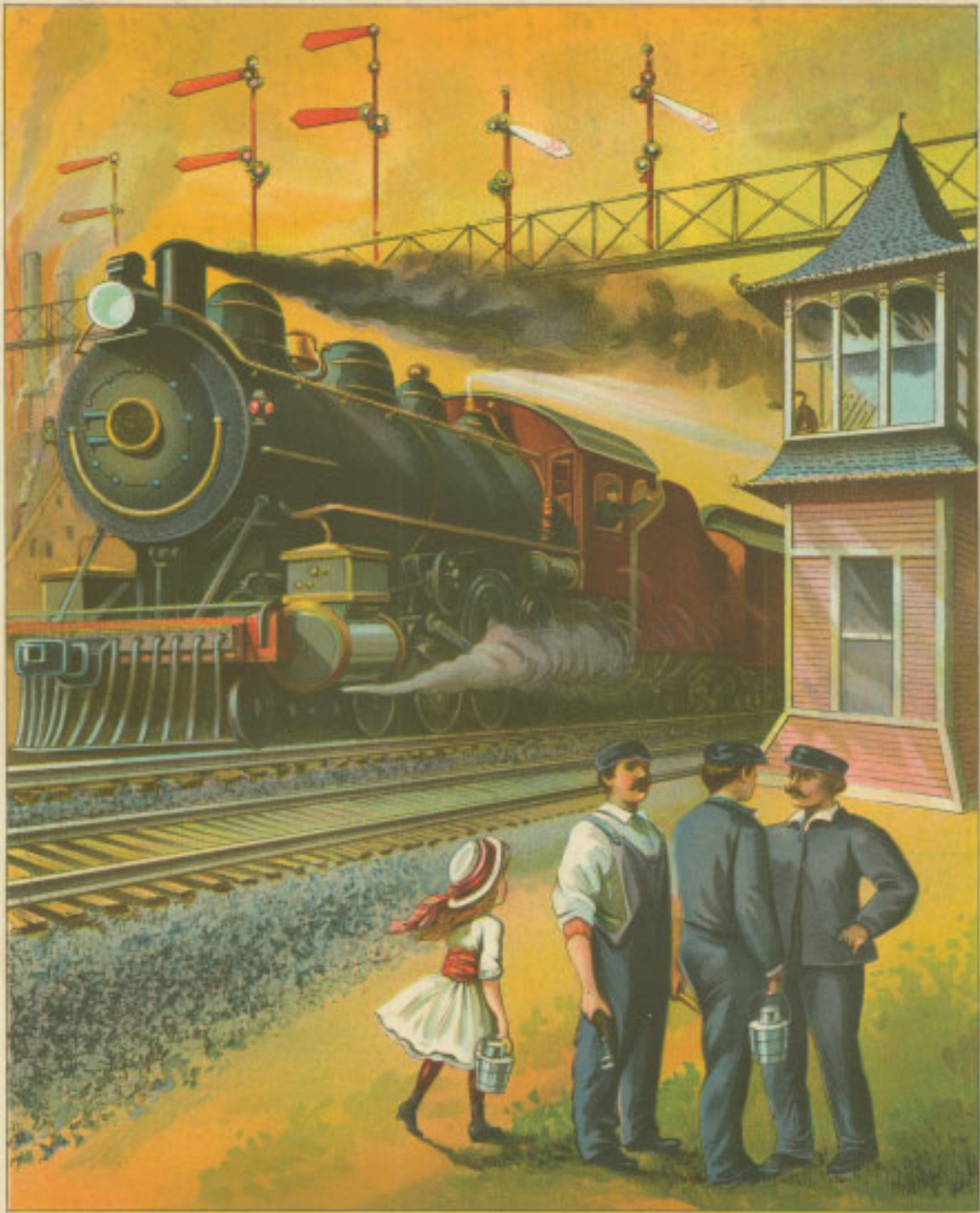


©  
CHARLES E. GRAHAM & CO.  
NEWARK, N. J. & NEW YORK  
MADE IN U. S. A.

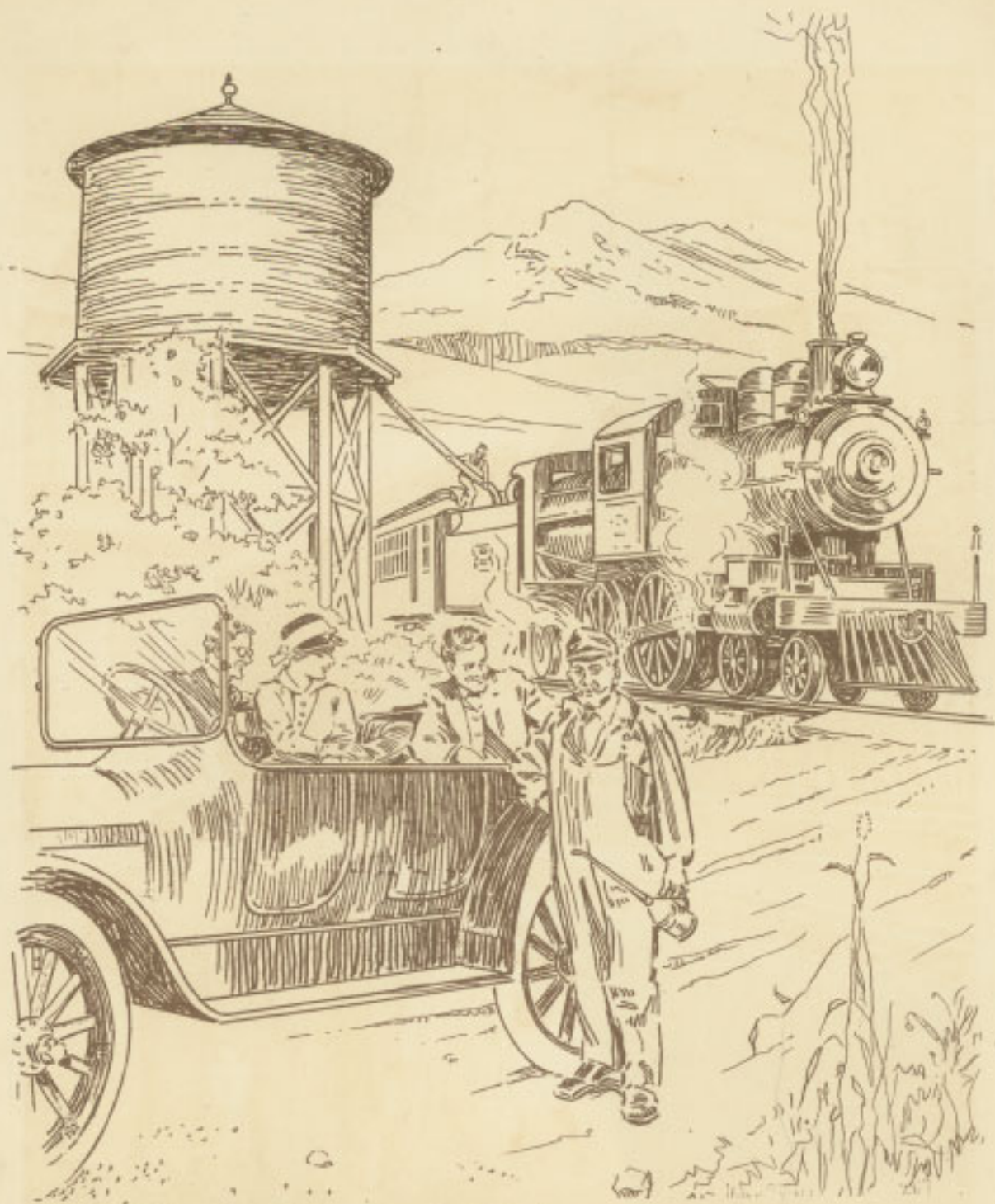
9131



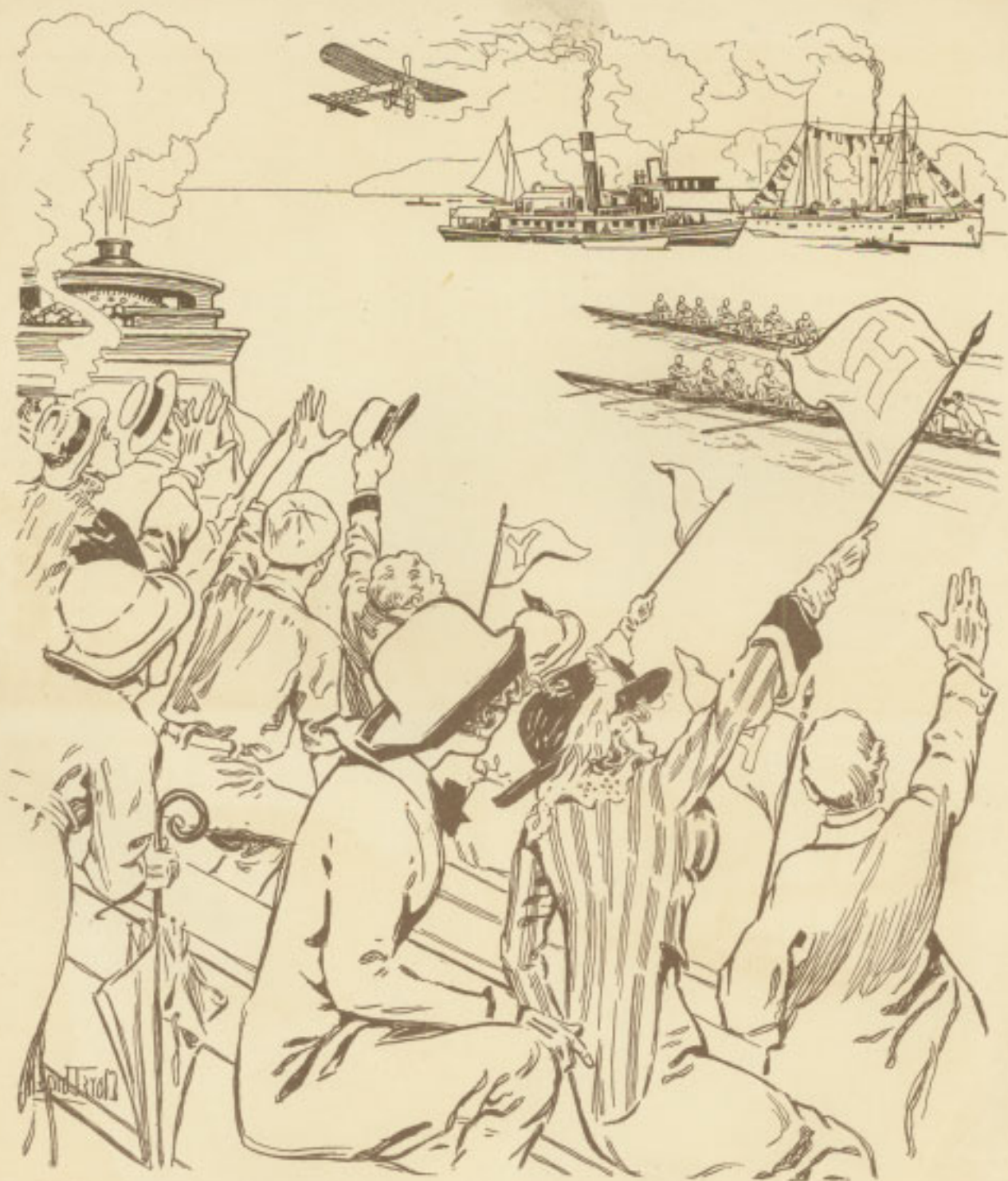
**THE ROUND HOUSE** is the place where the railroad engines are kept when they are not working. The engines are turned around on a big turn table so each can be run on the different tracks which all lead to the turn-table in the centre.



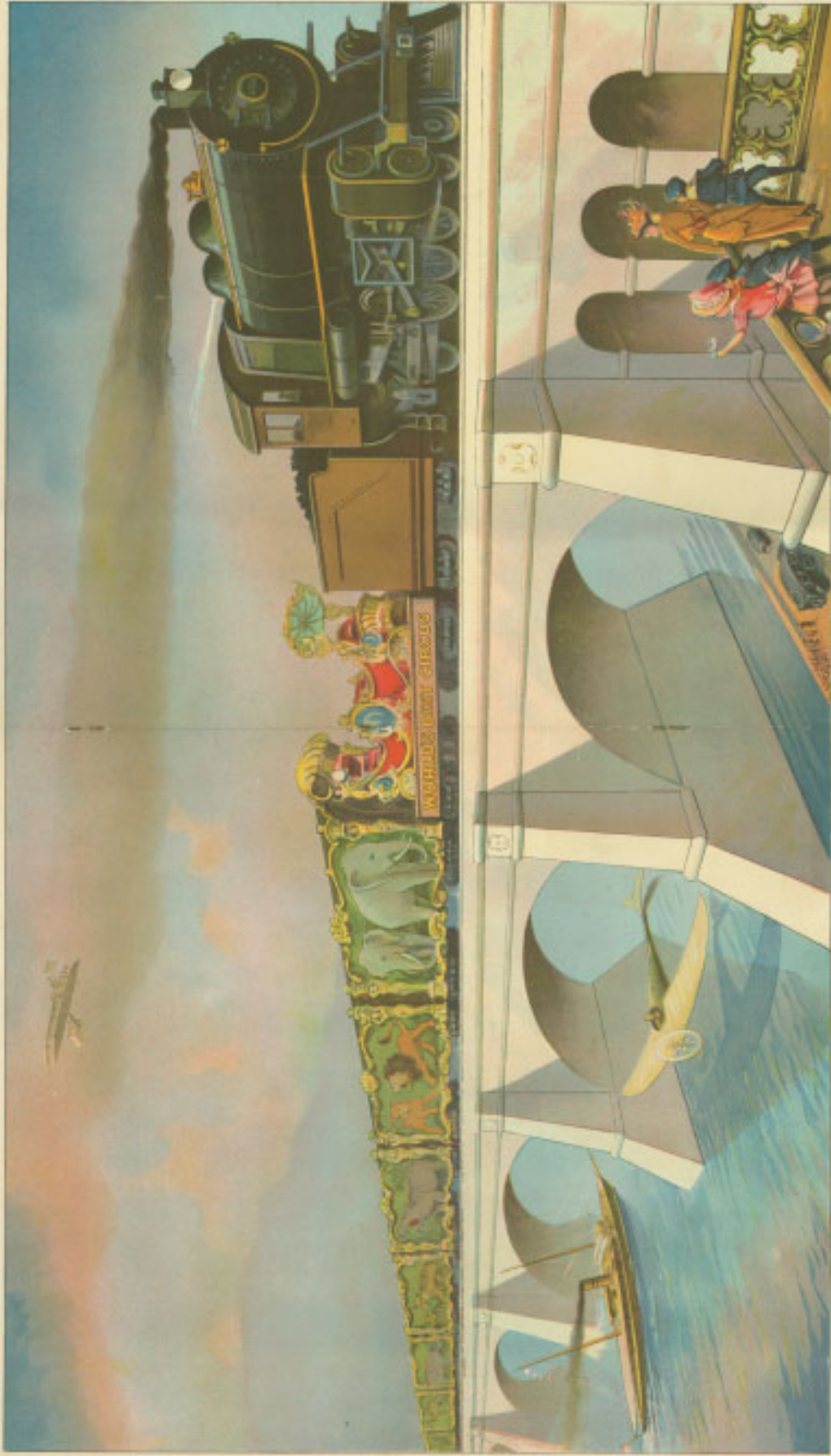
Passing a Signal Tower



**THE WATER TANK** is seen frequently along the route of the railroads and plenty of water must be taken on and carried in the engine tender to make steam which is the power used to drive the big engines.



**AN OBSERVATION TRAIN** is often made up to follow the great college boat races, where the railroad runs along the river bank. Flat cars are used with seats fixed on them for the spectators.



The Circus is Coming to Town



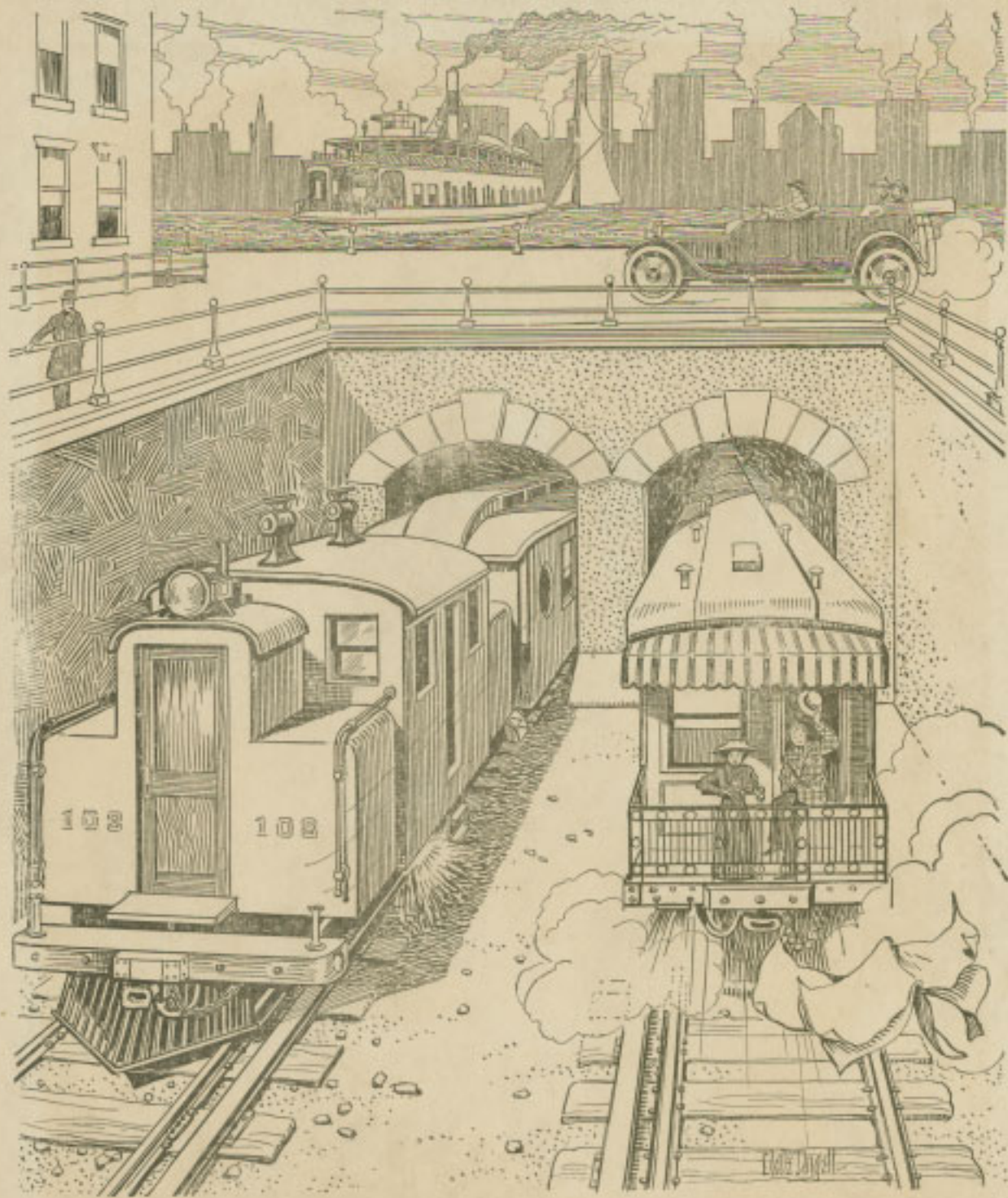
**THE TRAIN FERRY** carries entire trains across rivers where there are no bridges. Some of the largest train boats have several tracks and carry a train on each. The boats are tied in slips at the shore so that the tracks meet exactly those on the land.



**THE STAGE COACH** is used in the country where towns are few. The stages meet trains at the stations and take on passengers to be carried to their homes away from the railroad. Some of the stage routes are several hundred miles long.



Engineer and Fireman



**THE TUNNELS** are passages for trains under mountains, hills and rivers. The tunnels are dark but the trains are well lighted. Electric motors are often used, this avoids the smoke of steam engines which is very unpleasant in the tunnels.